

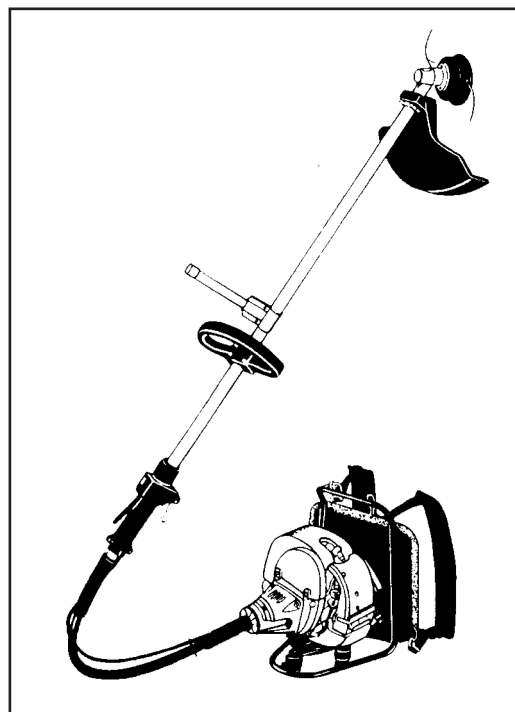
# McCULLOCH®

## PARTNER

### ILLUSTRATED PARTS LIST

#### ELITE 4200 BP ELITE X 4600 BP PARTNER B420 BP

SERIAL NUMBER PREFIX 01



March 2002

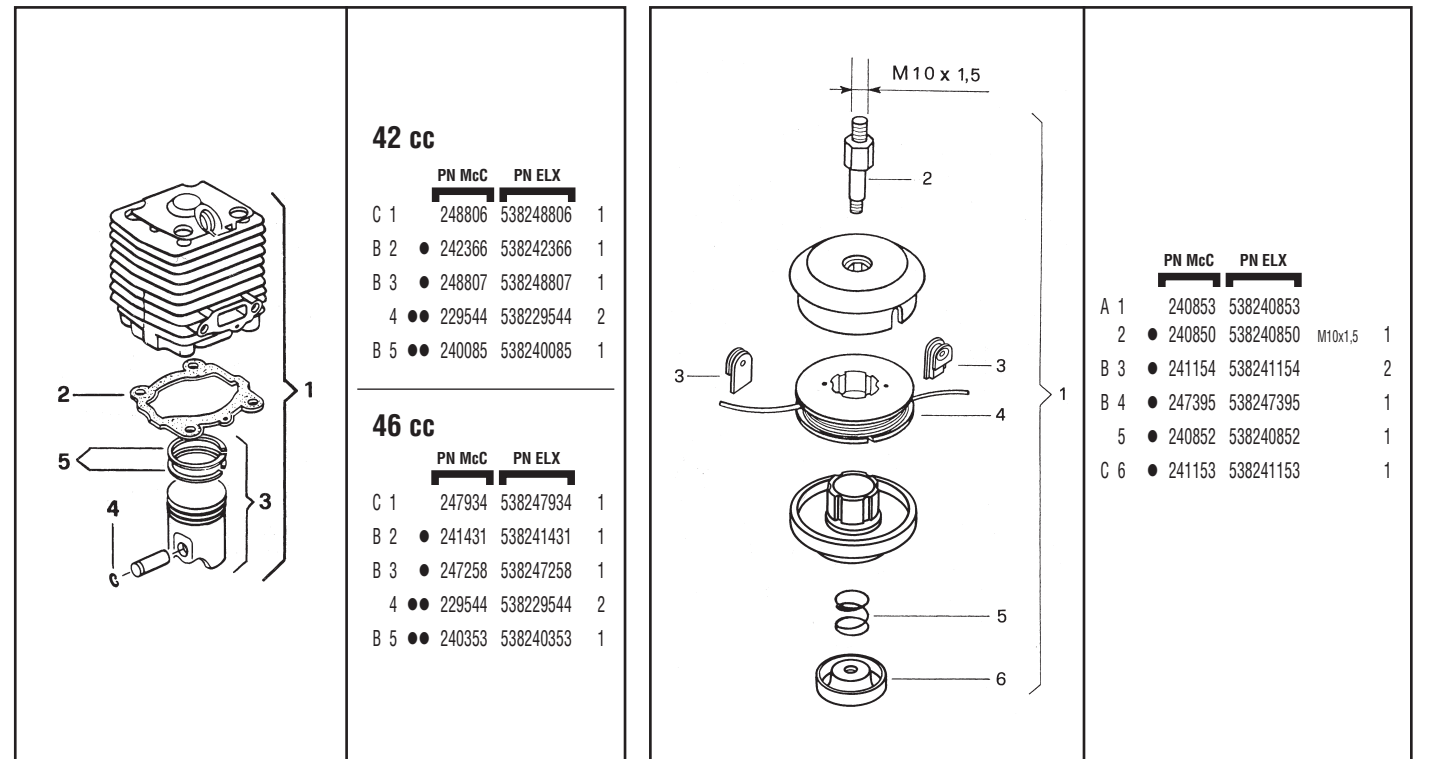
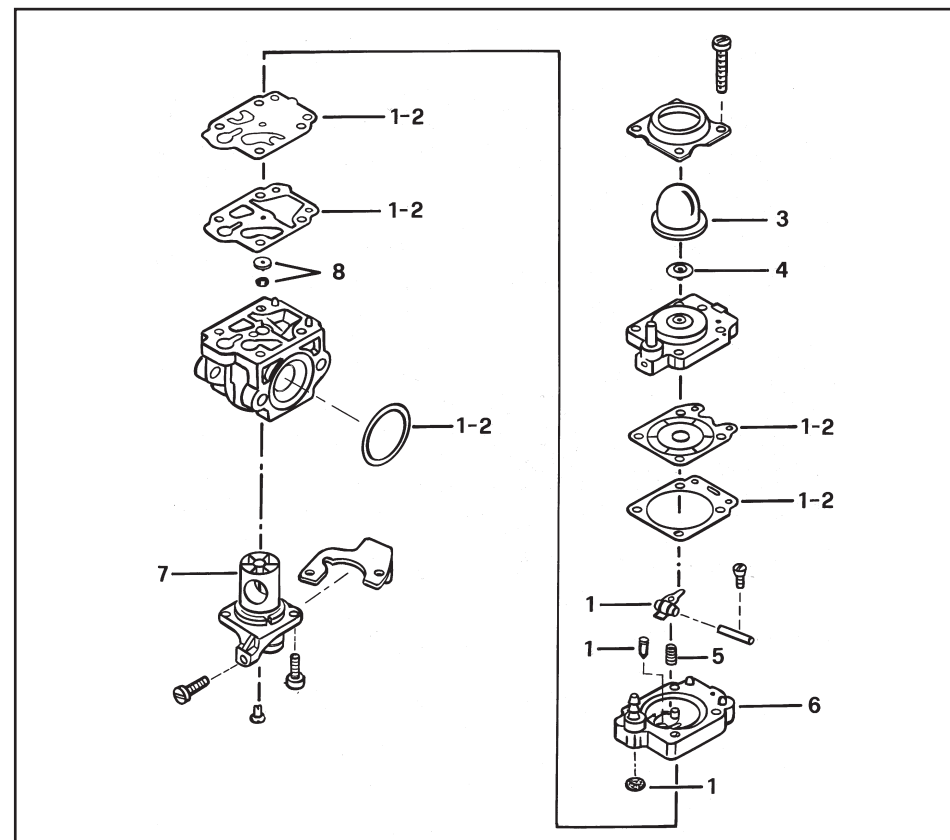


FIGURE 3

FIGURE 4



WALBRO WYJ 183A (46 cc)

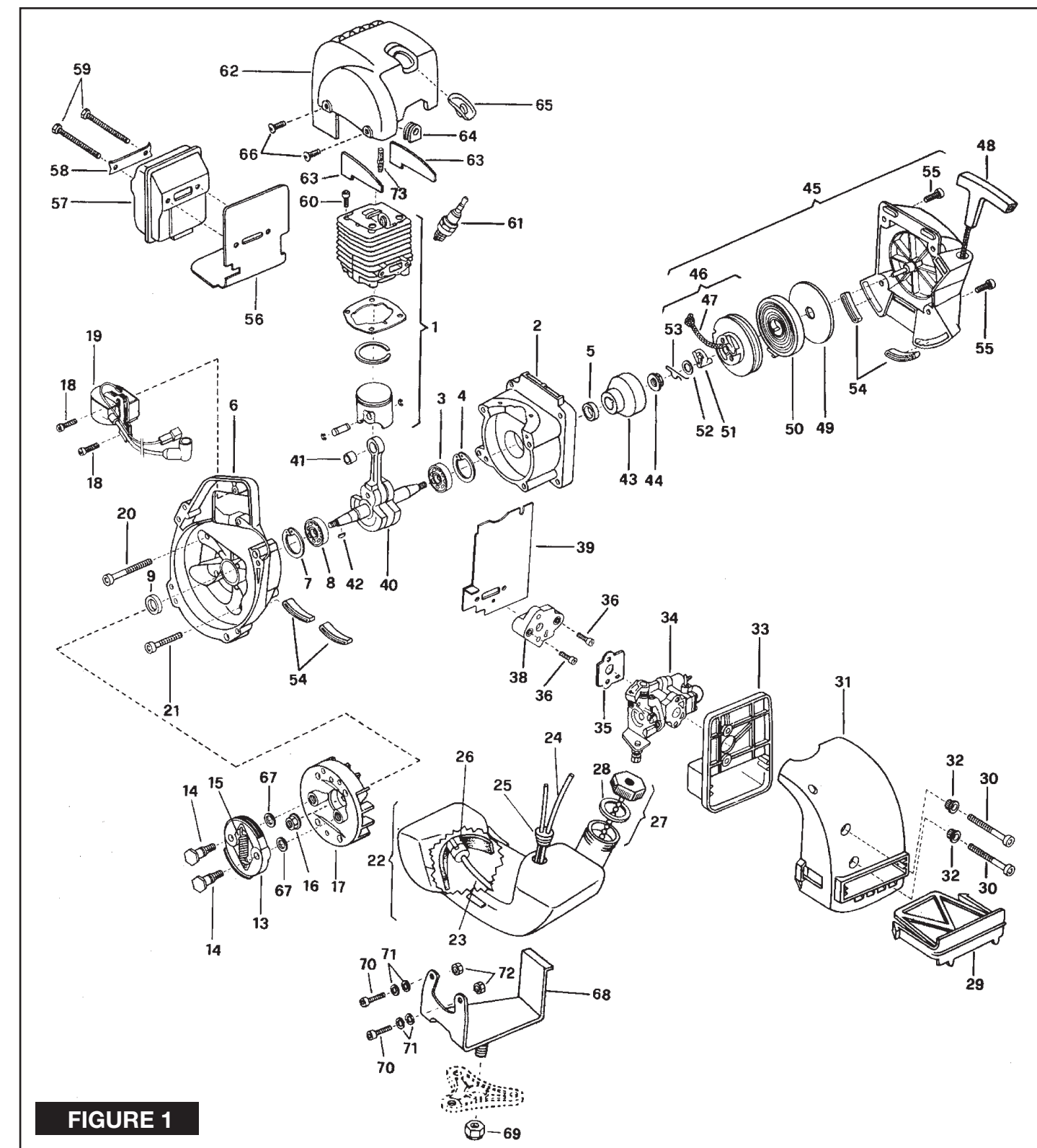
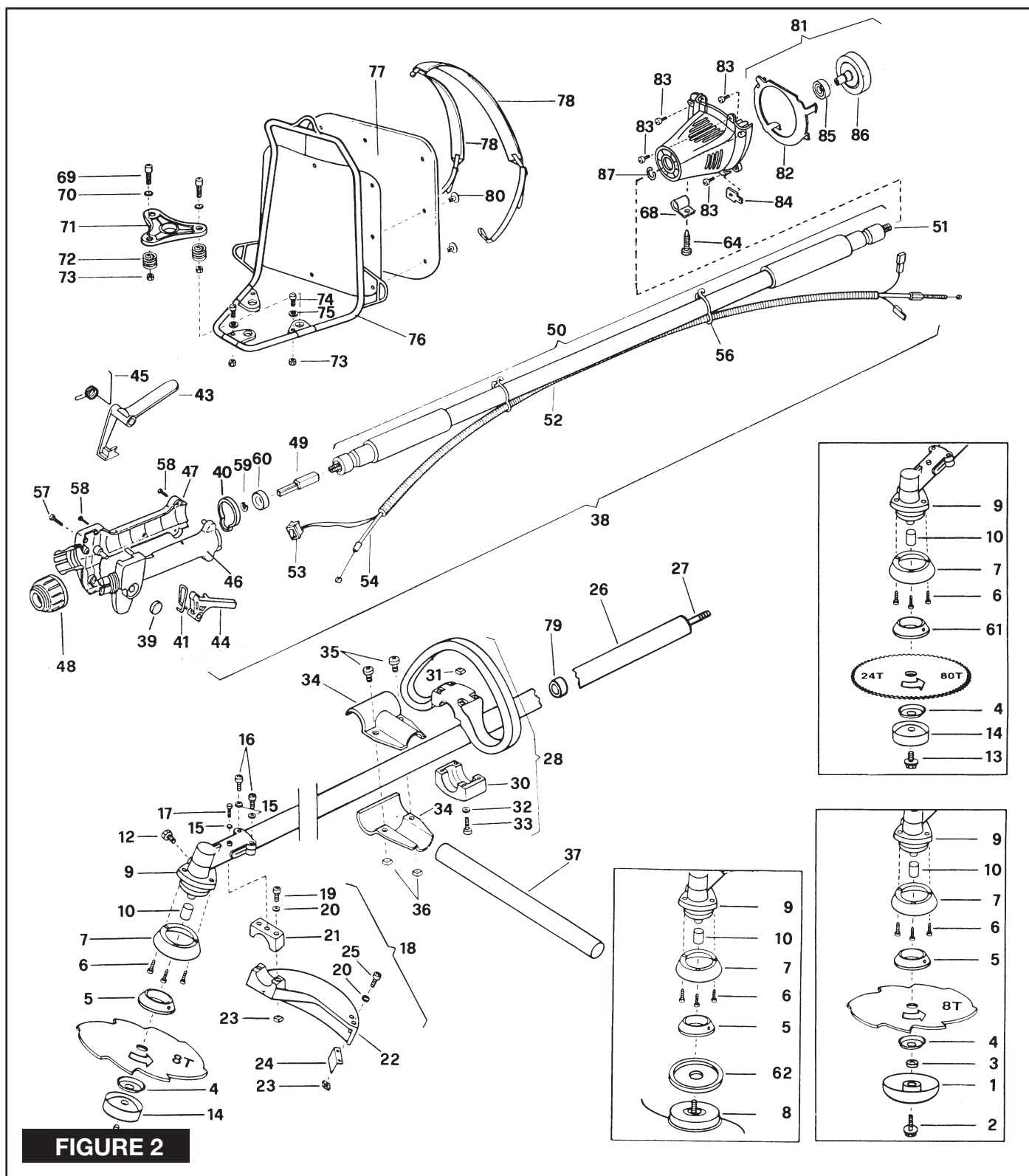
WALBRO WYJ 208 (42 cc)

	PN McC	PN ELX	
C -	241268	538241268	1
B 1	● 247955	538247955	1
A 2	●● 247956	538247956	1
C 3	● 225834	538225834	1
C 4	● 247957	538247957	1
C 5	● 247958	538247958	1
C 6	● 247962	538247962	1
C 7	● 247961	538247961	1
C 8	● 247959	538247959	1

	PN McC	PN ELX	
C -	241476	538241476	1
B 1	● 247955	538247955	1
A 2	●● 247956	538247956	1
C 3	● 225834	538225834	1
C 4	● 247957	538247957	1
C 5	● 247958	538247958	1
C 6	● 247962	538247962	1
C 7	● 247961	538247961	1
C 8	● 247960	538247960	1

FIGURE 5

A = high moving - alta rotazione - haute demande - große Nachfrage  
 B = medium moving - media rotazione - moyenne demande - mittelmäßige Nachfrage  
 C = slow moving - bassa rotazione - basse demande - wenige Nachfrage



	PN McC	PN ELX		PN McC	PN ELX		PN McC	PN ELX		PN McC	PN ELX		PN McC	PN ELX							
A 1	240809B	538240809B	1	19	● 235806	538235806	M5x20	2	37	246864	538246864	1	C 55	● 242159	538242159	1	76	240172	538240172	1	
A 2	240806	538240806	1	20	● 235248	538235248	4	38	241427	538241427	1	56	● 240200	538240200	2	77	240229	538240229	1		
A 3	240807	538240807	1	21	● 240870	538240870	1	39	● 241297	538241297	1	57	● 240617	538240617	2	78	240246	538240246	2		
A 4	229834	538229834	1	22	● 240932	538240932	1	40	● 242159	538242159	1	58	● 240618	538240618	4	79	236383	538236383	5		
A 5	242410	538242410	1	23	● 236732	538236732	4	41	● 235932	538235932	1	59	● 235224	538235224	1	80	240588	538240588	8		
A 6	240688	538240688	M5x14	24	● 241973	538241973	1	43	● 240041	538240041	1	60	● 235897	538235897	1	81	242237	538242237	1		
B 7	240767	538240767	1	25	● 235802	538235802	M5x14	2	44	● 240042	538240042	1	A 61	● 240936	538240936	1	82	● 242398	538242398	1	
A 8	FIGURE 4	FIGURE 4	1	26	● 240828	538240828	1	45	● 240043	538240043	1	62	● 241155	538241155	1	83	● 235806	538235806	M5x20	4	
9	240824	538240824	1	27	● 240189	538240189	1	46	● 240166	538240166	1	64	● 240468	538240468	1	84	● 228139	538228139	1		
10	● 247272	538247272	1	28	● 236999	538236999	1	47	● 240167	538240167	1	68	● 241480	538241480	1	85	● 235918	538238918	1		
12	● 240151	538240151	M8x10	30	● 236809	538236809	1	48	● 240170	538240170	1	69	● 229077	538229077	M5x18	3	86	● 240194	538240194	1	
A 13	229842	538229842	M10x16	31	● 236642	538236642	4	49	● 240181	538240181	1	70	● 227259	538227259	3	87	● 236378	538236378	1		
A 14	236596	538236596	1	32	● 236936	538236936	4	50	● 240187	538240187	1	71	● 240171	538240171	1						
15	236529	538236529	3	33	● 228320	538228320	M6x45	4	C 51	● 240185	538240185	1	72	● 240196	538240196	3					
16	235804	538235804	M5x30	34	● 240682	538240682	2	C 52	● 241443	538241443	1	73	● 240592	538240592	6						
17	236381	538236381	M5x10	35	● 235911	538235911	M6x12	2	C 53	● 236394	538236394	1	74	● 235802	538235802	M5x14	3				
B 18	247209	538247209	1	36	● 236642	538236642	2	54	● 241442	538241442	1	75	● 227259	538227259	3						

A = high moving - alta rotazione - haute demande - große Nachfrage B = medium moving - media rotazione - moyenne demande - mittelmäßige Nachfrage C = slow moving - bassa rotazione - basse demande - wenige Nachfrage

	PN McC	PN ELX		PN McC	PN ELX		PN McC	PN ELX		PN McC	PN ELX		PN McC	PN ELX								
C 1	FIGURE 3	FIGURE 3	1	C 19	● 241298	538241298	42CC	1	32	● 227924	538227924	2	A 47	● 227703	538227703	1	62	241829	538241829	Gold 42CC	1	
2	247936	538247936	1	20	● 235808	538235808	M5x50	2	C 34	● 241281	538241281	1	48	● 240884	538240884	1	241187	538241187	Yellow 42 CC	1		
3	● 235900	538235900	1	21	● 235804	538235804	M5x30	2	A 35	● 241281	538241281	1	49	● 227467	538227467	1	241430	538241430	Yellow 46 CC	1		
4	● 235899	538235899	1	C 22	● 241542	538241542	1	36	● 235806	538235806	M5x20	2	B 50	● 227300	538227300	1	241981	538241981	Gold 46CC	1		
C 5	● 228872	538228872	1	B 23	● 229809	538229809	1	C 38	● 241481	538241481	1	B 51	● 240492	538240492	1	63	241416	538241416	2			
6	247935	538247935	1	B 24	● 229743	538229743	1	C 39	● 241428	538241428	1	B 52	● 227470	538227470	1	64	236322	538236322	1			
7	● 235899	538235899	1	C 25	● 235675	538235675	1	40	● 241266	538241266	1	53	● 240485	538240485	1	65	241241	538241241	1			
8	● 235900	538235900	1	A 26	● 240452	538240452	1	C 41	● 235742	538235742	1	54	● 241248	538241248	4	66	240688	538240688	M5x14	2		
C 9	● 228872	538228872	1	B 27	● 236563	538236563	1	C 42	● 227631	538227631	1	55	● 236527	538236527	M6x16	4	67	236956	538236956	2		
B 13	248808	538248808	1	A 28	● 236564	538236564	1	C 43	● 241223	538241223	1	C 56	● 241280	538241280	1	68	241447	538241447	1			
14	● 242369	538242369	1	B 29	● 241213	538241213	1	C 45	● 241283	538241283	1	C 57	● 241432	538241432	1	69	240469	538240469	1			
C 15	● 241270	538241270	1	30	● 235808	538235808	M5x50	2	44	● 235218	538235218	1	58	● 227236	538227236	1	70	235806	538235806	M5x20	2	
16	235218	538235218	1	31	● 241212	538241212	Yellow/Giallo	1	C 45	● 241834	538241834	Gold/Oro	1	59	● 227274	538227274	M5x60	2	71	235248	538235248	4
17	241240	538241240	1	B 46	● 227194	538227194	1	A 61	● 92879	538092879	1	60	● 227565	538227565	M5x25	4	72	235216	538235216	2		
18	235806	538235806	M5x20	2	241589	538241589	Gold/Oro	1	73	● 94273	538094273	46CC	1									

A = high moving - alta rotazione - haute demande - große Nachfrage B = medium moving - media rotazione - moyenne demande - mittelmäßige Nachfrage C = slow moving - bassa rotazione - basse demande - wenige Nachfrage